

PARTS LIST AND OWNERS MANUAL

UC-90 PNEUMATIC UNIVERSAL CRIMP TOOL

ASSEMBLY:

Upon receipt, inspect package for all parts.

Securely attach #A-202-4 (Drwg 4) Bench stand to a solid surface.

Attach #UC-9 jaw housing onto #SP-004 pneumatic power pack. Apply air to “normally closed” air inlet. This will drive the piston forward. Disconnect the air hose from the “source” air. This will allow the piston to remain in the fully extended position. Install the UC-9 jaw and housing assembly to the power pack by screwing it into place. Secure the jaw housing to the power pack by tightening the small set screw at the base of the jaw housing. Once installed, reconnect the air source to allow the piston to retract.

Slide power pack into the #A-202 bench stand (which was first secured to the worksurface). Attach air hoses to power pack and then to the footswitch. Air hoses must be equipped with 1/8” NPT male thread to match the air inlet ports on the power pack. Follow diagram on page 2 for plumbing the air hoses to the power pack and footswitch. Apply teflon sealant (tape or paste) to the fitting threads to prevent air leakage.

Install an in-line FRL (Filter-Regulator-Lubricator) within 15 ft. from the tool to remove moisture from the compressed air and automatically inject air tool oil into the power pack. Only a small quantity of oil is required to maintain lubrication to the internal components of the power pack. If no lubricator is available, periodically place several drops of air tool oil into the air input opening of the power pack.

Test unit to insure free movement of the jaws. Follow all safety instructions when operating this tool.

Install optional crimp dies into the jaws.



SAFETY INSTRUCTIONS:

Inspect tools and hose each day prior to operation. Air hose that is frayed, cut or abraided needs to be replaced.

If the tool is not in use and not positively disconnected from the air supply, then the air supply must facilitate isolation and dissipation of pressure by a suitable and lockable shutoff device in order to prevent unexpected startup.

Beware of hair, fingers ties, loose clothing, etc. when operating the tool. Keep away from moving parts.

Always wear eye protection when operating the tool. Beware wire or chip ejection during use.

Only the tool recommended and provided by Custom Products & Services should be used on this power pack. Use of other tools may constitute a hazard and void all warranties.

These tools are not for use in explosive atmospheres.

These tools are not insulated from coming in contact with electric power sources.

Do not point or aim tool at another person or yourself.

Do not use any attachments not provided by Custom Products & Services, Inc. with this tool. Injury may result.

Be sure that the tool and bench stand are secured firmly before use.

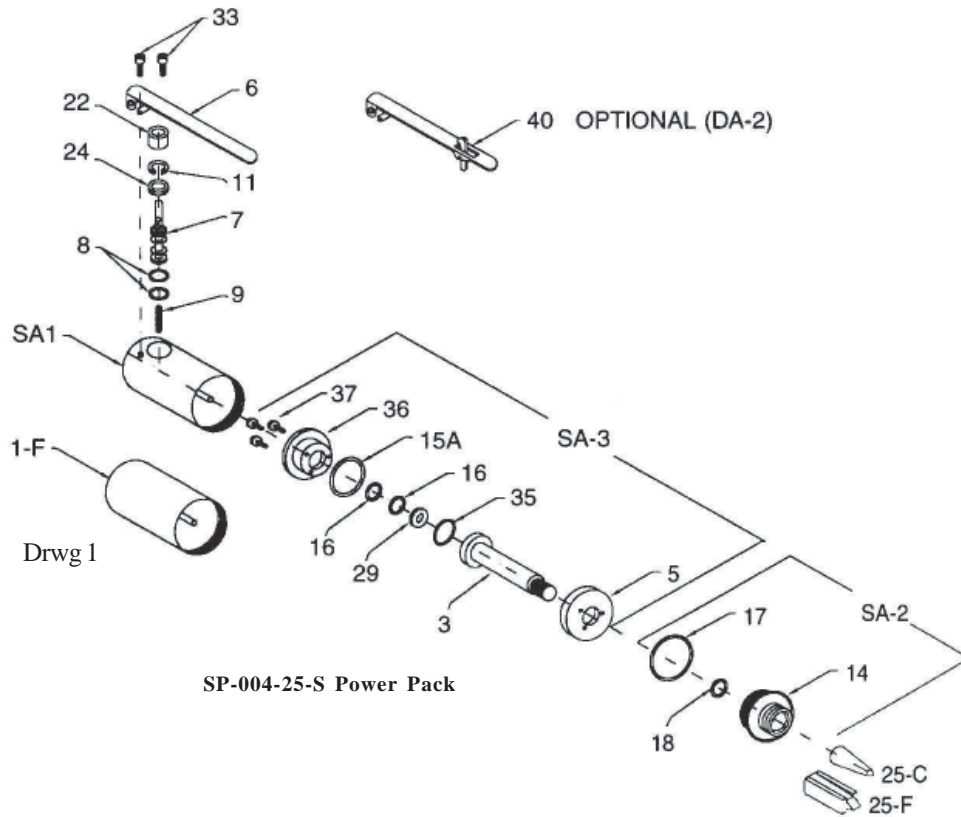
DO NOT EXCEED RECOMMENDED WIRE SIZE OR AIR PRESSURE. This may damage tool and / or cause



CUSTOM PRODUCTS & SERVICES

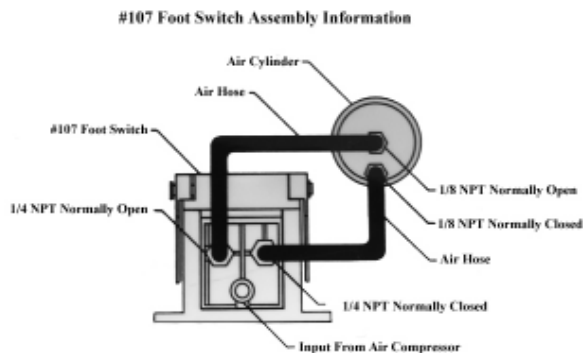
6286 Claude Way E, Inver Grove Heights, MN 55076-4435
PH: 888-444-1202 (Toll Free) or 651-452-0113 Fax: 651-452-2264

E-mail: Info@custom-products.com
Website: www.custom-products.com



DRWG #	DESCRIPTION	PART #
1-F	Piston Housing	1-F-004
3	Remote	3-003
5	Piston Shaft	5-004
14	Piston Lock Plate	14-004
15A	End Cap	
16	Piston Seal O-Ring	15A-004
17	O-Ring (2 required)	16-003-K10 *
18	O-Ring	17-004-K10 *
25-S	End Cap O-Ring	18-01
29	Cam	25-S
35	Piston Washer	24-01
36	O-Ring	35-003-K10

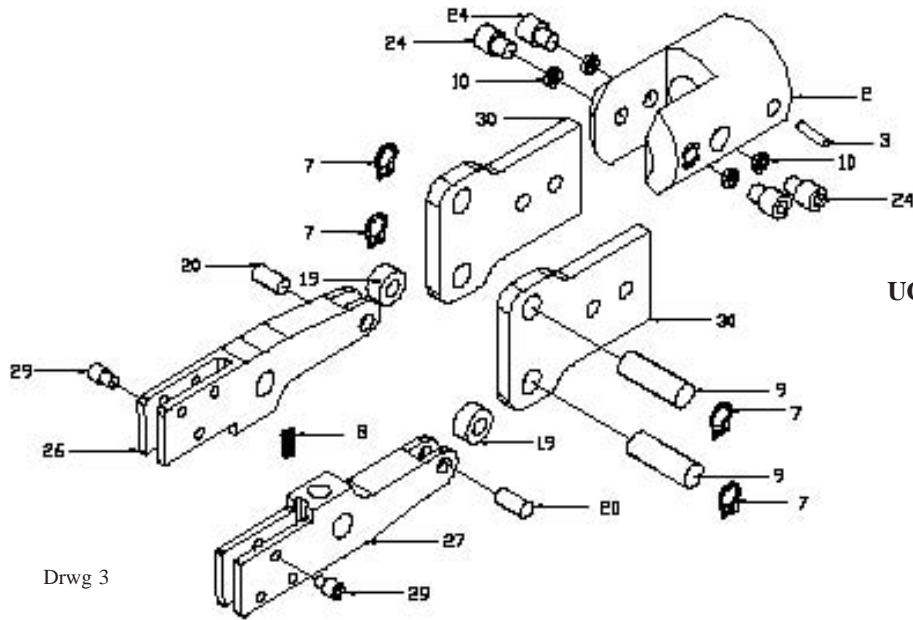
* 10 per package



Footswitch Assembly

Follow diagram to insure proper assembly. The Normally Open outlet on the power pack is always in the middle. The air inlet is at the rear of the footswitch. Please be sure air from the regulator and air filter is plumbed into the rear of the footswitch. As with all pneumatic tools, the main air supply should be no more than 15 ft. away and have a regulator / filter/ lubricator installed at this point.

Regular tool and footswitch lubrication will prolong the life of the tool.



UC-9 Jaw & Housing

Drwg 3

DRWG #	DESCRIPTION	PART #
2	Jaw Housing for A-4 Jaws	4-2B
3	Set Screw	4-3A
7	Snap Ring (4 required)	4-7A
8	Internal Jaw Spring	4-8A
9	Pivot Pin (2 required)	4-9A
10	Lock Washer (4 required)	4-10A
19	Jaw Roller (2 required)	4-19-525-K2
20	Roller Pin (2 required)	4-20A
24	Jaw Assembly Screw (4 required)	4-24A
26 / 27	Jaw Set	RUC-9
29	Insert Holding Screw (2 required)	38-RU-9
30	Side Plate (2 required)	4-30A

Optional Crimping Dies

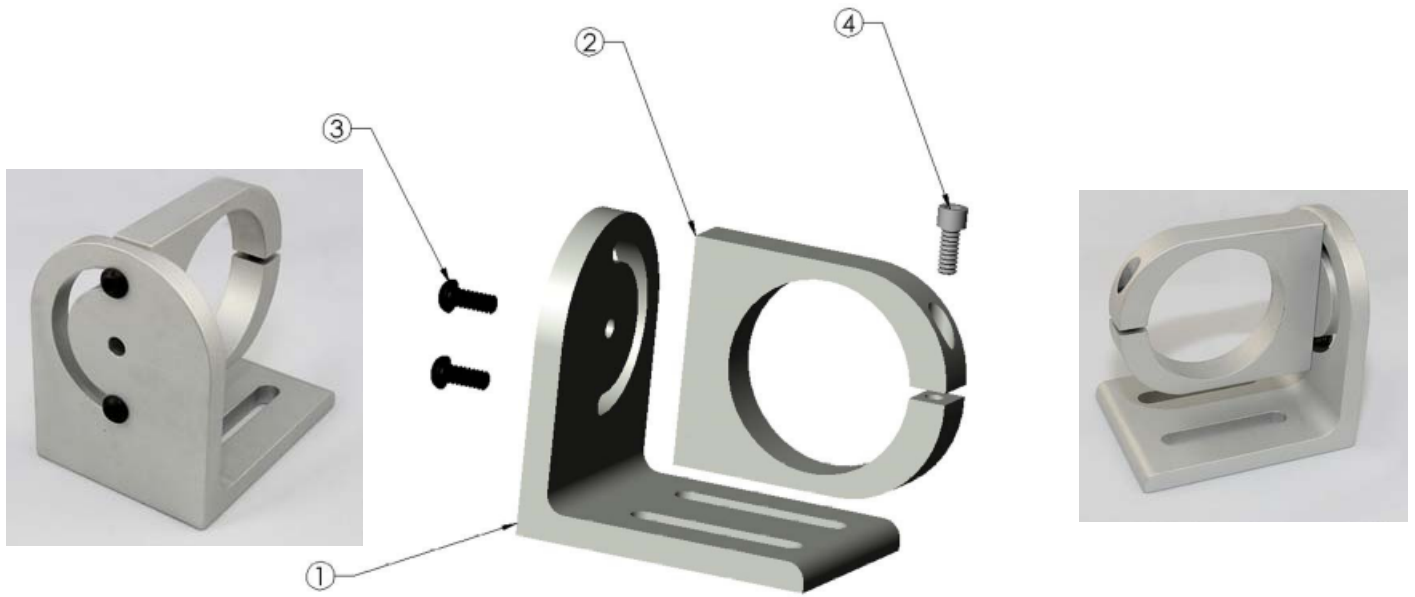
	UC-50-1 Triple hex cavity die with crimp dimensions of .255", .213" & .068"
	UC-50-4 Triple hex cavity die with crimp dimensions of .429", .100" & .080"
	UC-50-7 Triple hex cavity die with crimp dimensions of .350", .320" & .255"
	UC-50-10 22-12 AWG open barre connectors. Triple cavity, .165", .100", .090"

	UC-50-2 Quad hex die with crimp dimensions of .324", .255" .068" & .042"
	UC-50-5 Triple hex cavity die with crimp dimensions of .255", .213" & .068"
	UC-50-8 22-10 AWG red, yellow & blue fully insulated terminals. .355", .255", & .235"
	UC-50-11 Triple hex cavity die with crimp dimensions of .255", .213" & .068"

	UC-50-3 Quad hex die with crimp dimensions .213", .178", .068" & .042"
	UC-50-6 22-8 AWG non-insulated ring, spade & butt splice terminals. .295", .255", .160", .140"
	UC-50-9 22-10 AWG red, yellow, blue, fully insulated terminals. .340", .255", .245"
	UC-50-12 Triple hex cavity die with crimp dimensions of .255", .213" & .068"

A-202-4 BENCH STAND

DRWG #	DESCRIPTION	PART #
1	Mounting Bracket	A-202-2-1
2	Tool Holder Bracket	A-200-1-004
3	Holder Screw (2 required)	A-202-2-3
4	Holder Bracket Screw	A-202-2-1



107 Footswitch

